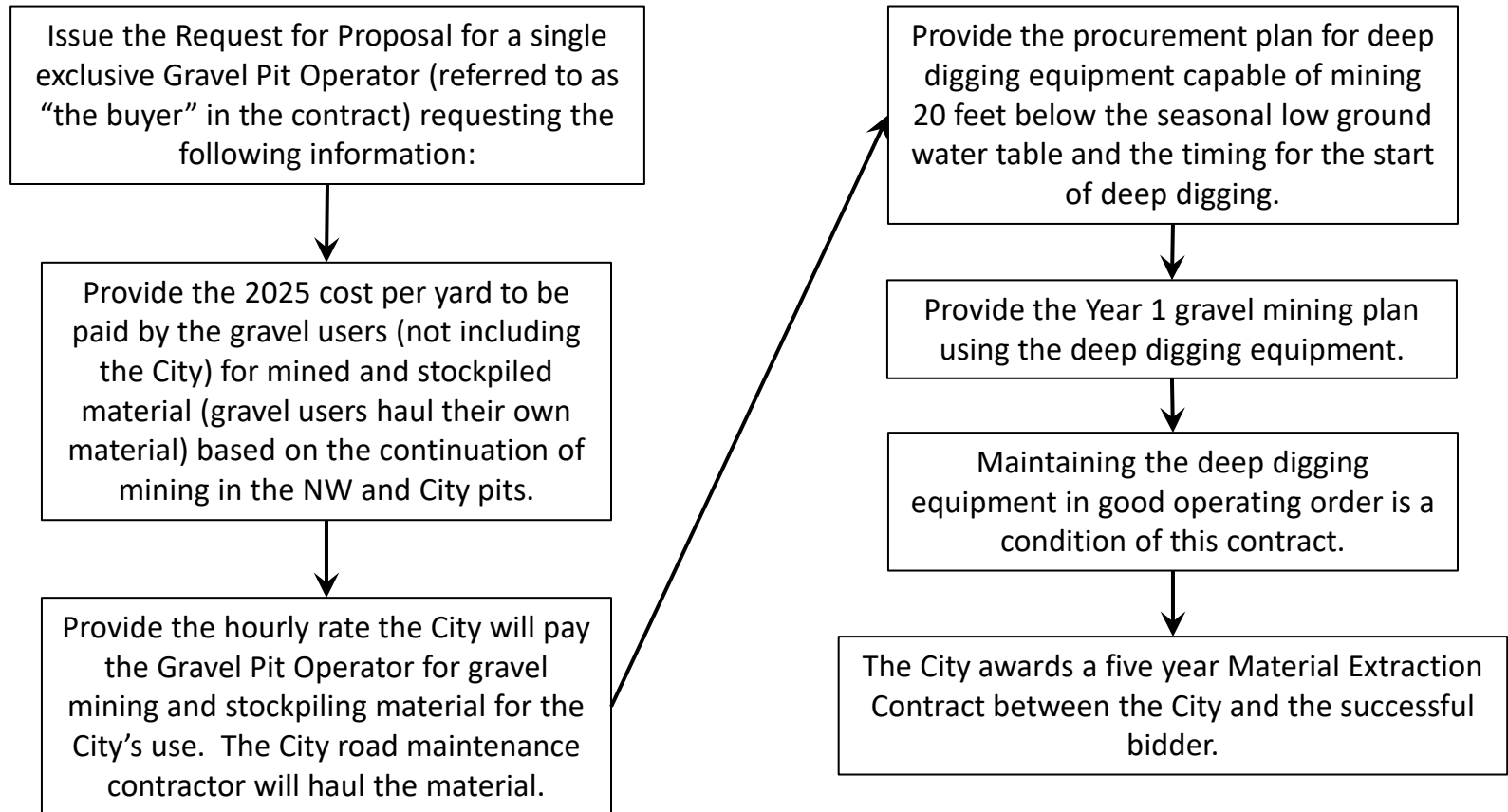


Gustavus Gravel Pit Single Operator Plan

Request for Proposal and Contract Implementation



Gustavus Gravel Pit Single Operator Plan

Planning Implementation

During Year 1 the City and Gravel Pit Operator will collaborate to complete the long term gravel mining plan that includes reentry of the shallow dormant pits, deep digging around current pit perimeters, mining out causeways and the reclamation plan.



Based on the mining and reclamation plan, the City will obtain ADF&G Fish Habitat permits for reentering shallow dormant pits. Permits must be in place for Year 2 mining.



The City and the Gravel Pit Operator will collaborate annually to update the mining plan for the next year and also project the mine plan forward for five years.



Annually, based on the mining plan for the upcoming season and the City's fiscal budgeting timeline, the City and Gravel Pit Operator will negotiate the following:



The royalty the Gravel Pit Operator pays the City per yard of material removed from the gravel pit area.



The price per yard of material paid by the gravel users to the Gravel Pit Operator.



The hourly rates or reduced price per yard the City will pay the Gravel Pit Operator to mine and stockpile gravel for City projects.

Gustavus Gravel Pit Single Operator Plan Operation Structure

